

SPRING WORDSEARCH

M A R C H R A R E D W W L S I
M B L Z D C A L F X F P A E D
T E U I P G F I N V Z J D W G
F U A N N I O C N X J Q Y G S
N L U D N I A A L B B C B D H
E G O Y O Y L Q D O O T U U O
S X F W L W F R D Q V W G F W
T T L D E A S T E R C E G K E
S T Z A P R I L V J B S R B R
R N U P Y J S P G L U H P S S
C O L O R F U L I J Z X I G J
J H W X K J M A Y L Z X G N K
T K K Y U L A M B V I O L D O
C U C U C H I C K B N T E G G
H X M T P L T Y E V G J T X T

WORD LIST

APRIL	CLOVER	FOAL	MEADOW
BUNNY	COLORFUL	LADYBUG	NEST
BUZZING	EASTER	LAMB	PIGLET
CALF	EGG	MARCH	RAINBOW
CHICK	FLOWERS	MAY	SHOWERS

Homemade GIFTS MADE EASY

NEWSLETTER

April 2024

APRIL SHOWERS
 Bring
 MAYFLOWERS



Dawn's New Season
 By Joanne Marlowe

I catch glimpses of Spring.
 The grass is a little greener.
 The tulips, desperately trying to grow.
 It's been raining for days,
 but I don't care.
 I close my eyes and breathe in the last of
 the winter air.
 And like the trees and daisies,
 I anxiously await the sun to shine down
 upon my face.
 The butterflies and bees catch a ride with
 the warm breeze.
 As the soft wind gently carrasses my skin,
 I silently whisper "patience".
 The time for new beginnings and growth
 will soon be here.
 And the darkness of the old will be
 replaced by
 the brightness of the dawn's new season.

Copyright of Strangegirl Publications 2024

What's Inside:

- 1 Poem
- 2 Welcome & In Memoriam
- 2 Resident of the Month
- 3 Spirit Days
- 3 January Birthdays
- 3 Special Events & Outings
- 4 Crossword Puzzle
- 6 January Humour
- 6 Colouring Page
- 6 Brain Teasers
- 7 Resident Words of Wisdom
- 7 Infection Control
- 7 Make a Wish Program Info
- 8 Word Search



Welcome to the Wellington

Debb C, Annie H, Marie H, Widad K
Tom M, David M, Rick M, Liz N

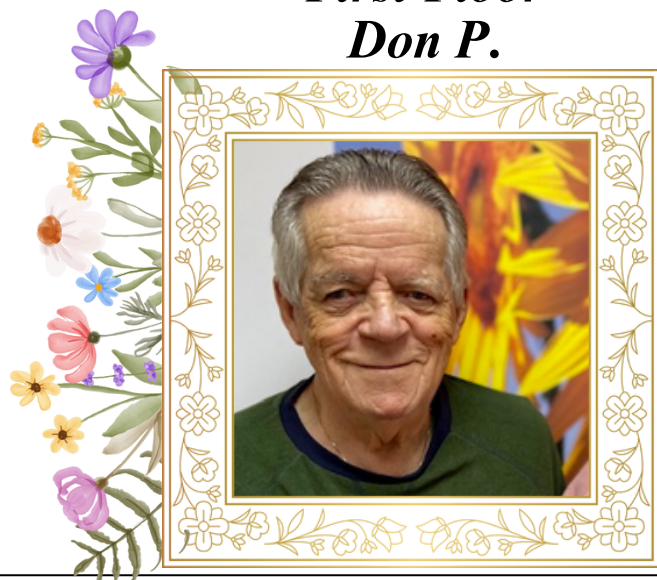
In Memoriam



Charlotte B, John C, David C, Betty C,
Gina D, Carole G, Andree L, Wali R,
Giovanna R

Resident of the Month

First Floor
Don P.



Don is a kind man who can always be found with his partner in crime and love of his life, Jane, his wife. Don actively participates in many recreation programs but especially enjoys live music. He loves sharing stories of his life with his wife in PEI and is kind to everyone he meets. In nice weather he can be found outside on the patio listening to music and tapping along. Don's kind nature is so appreciated by everyone, and we are thrilled to have him here at The Wellington. **Let's congratulate Don on being Resident of the Month for April 2024**

Second Floor
Denise B.



Denise is a new and delightful edition to The Wellington. Her cheery disposition and smile are contagious and she has made so many friends already. Denise attends nearly every program offered and is always encouraging others to join as well. When not in programs she can be found visiting with her loved ones or watching the hockey game! Denise's sweet nature is appreciated by all that know her and we are thrilled to have her here at The Wellington. **Let's Congratulate Denise on being Resident of the Month for April 2024**

Resident Words of Wisdom

What is your favourite thing about spring?

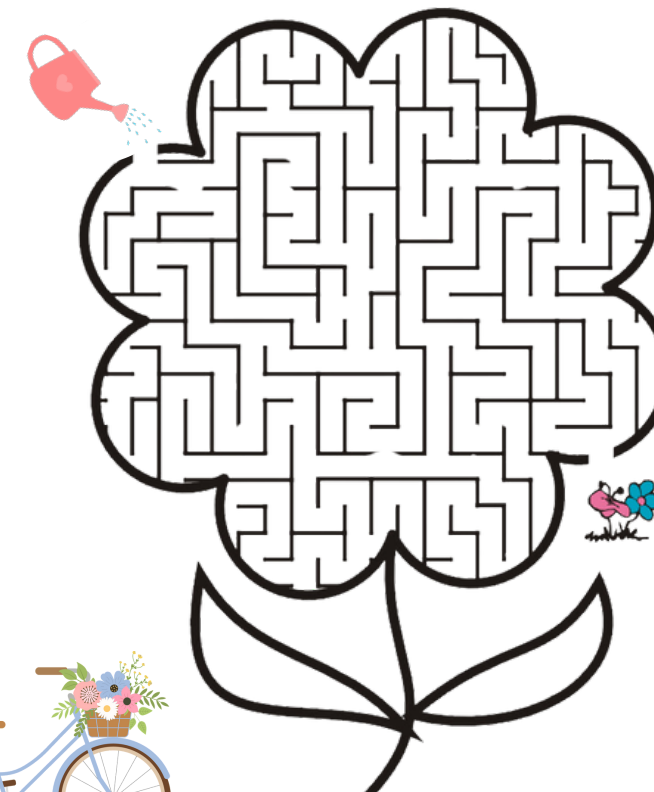
“Seeing robins” -Jane P.

“The flowers, violets and daffodils. And the weather warming up and the birds coming back so I can see them” - Violet G.

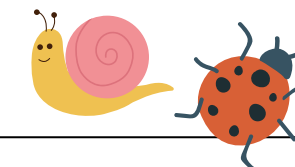
“I like the first signs of spring.” -Joan D



Maze

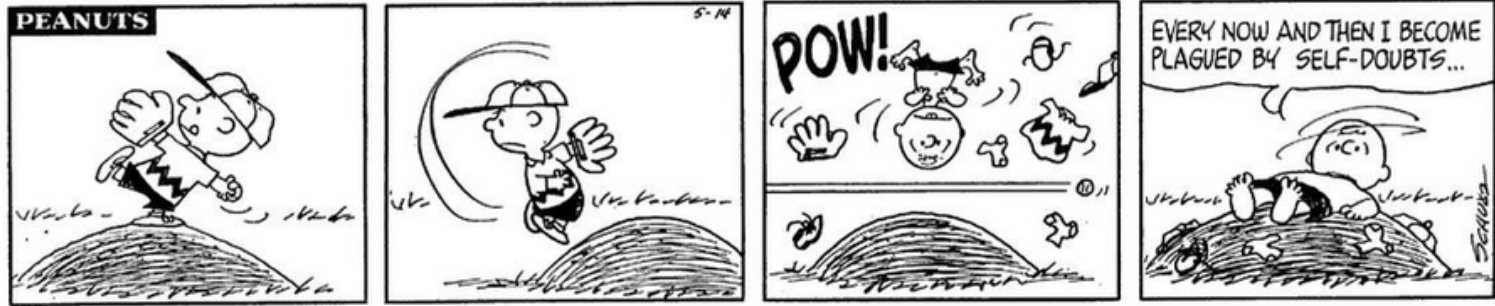


Infection Control



9 cases of Measles have been reported in Ontario this year, including one case here in Hamilton. Given the increased travel over March break, Public Health is urging everyone to be vigilant for Measles in anticipation of more cases. **Fast Facts:** Measles is airborne, extremely contagious, and has no treatment. It generally presents as flu-like symptoms 1-2 weeks after infection, followed by a rash 2-5 days later. If one person has measles, 9 out of 10 people around that person will also become infected if they are not protected. **Measles Symptoms:** High Fever (up to 104°F/40°C), Runny Nose, Cough, Red/Watery Eyes, Measles Rash. **Prevention:** The best protection against Measles is vaccination with 2 doses of the MMR vaccine (Measles, Mumps & Rubella). To check if you are immune, your doctor can order a blood test. Healthcare workers with a negative blood test are eligible for a booster dose.

April Humour



Colour Me!



April Fools Jokes

What goes up when April showers come down? An umbrella.

Wanna hear an April Fools' Day joke about paper? Never mind—it's tearable.

Why don't eggs tell April Fools' jokes? They'd crack each other up.

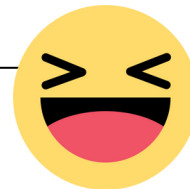
I was going to tell you a pizza joke for April Fools' Day, but it was too cheesy.

How does April Fools' Day end? With a "Y," of course.

Can February March? No, but April May.

Can I tell you an April Fools' Day joke about elevators? It works on many levels.

HA HA HA!



Spirit Days

April 3 - Read My Shirt Day

April 11 - Animal Print Day

April 22 - Green & Blue Day

April 25 - 90's Day

April Special Events

Apr 4 - St. Michael's School Visit

Apr 11 - Little Track's Petting Zoo

Apr 12 - Farewell Social for Romina & Rochelle

Apr 17 - Birthday Party with Aidan Purnell

Apr 18 - Meal Club: Seafood

Apr 19 - Pub Night with Manvir

Apr 22 - Spring Plant Sale

Apr 26 - Wine Tasting



This Month's Outings

April 2nd - Coffee at Wendy's

April 9th - Dundas Museum

April 16th - Lunch at Swiss Chalet

April 23rd - Shopping at Giant Tiger

April 26th - Coffee at Tim Horton's

April 30th - Shopping at Dollar Tree



April Birthdays

April 5 - Vera F

April 7 - Gord W

April 15 - Elizabeth R

April 26 - Janis B



Come Celebrate!

Resident Birthday Party

April 17 at 2:00pm

With Musical Entertainment

Aidan Purnell

2nd Floor Dining Room



Sign up at
ext. 112!

Earth Day Crossword



Across

2. We should put this in the bin
4. To use again
6. Trash
7. Earth Day falls in this month
8. Pollution is bad for the _____
10. Decayed organic material used as fertilizer
13. Decomposable
14. Polluted air
15. Surroundings
16. People are worried about how much of this in our oceans
17. A clear healthy liquid we drink

Down

1. To use less
3. Management of natural resources
5. Large body of water
8. A branch of natural science
9. A thick growth of trees
11. Large plants with trunks
12. We breathe this

